

Constant and seasonal drivers of bird communities in a wind farm: implications for conservation

Zuzanna M. Rosin¹, Piotr Skórka², Paweł Szymański³,
Marcin Tobolka⁴, Andrzej Luczak⁵ and Piotr Tryjanowski⁴

¹ Department of Cell Biology, Adam Mickiewicz University in Poznań, Poznań, Poland

² Institute of Nature Conservation, Polish Academy of Sciences, Kraków, Poland

³ Department of Behavioural Ecology, Adam Mickiewicz University in Poznań, Poznań, Poland

⁴ Institute of Zoology, Poznań University of Life Sciences, Poznań, Poland

⁵ ENINA, Poznań, Poland

ABSTRACT

Background. One of the most difficult challenges for conservation biology is to reconcile growing human demands for resources with the rising need for protecting nature. Wind farms producing renewable energy have been recognised to be a threat for birds, but clear directives for environmental planning are still missing.

Methods. Point counts were performed to study the relationship between eight environmental variables and bird populations in different parts of a year on the largest Polish wind farm between March 2011 and February 2013. Variables potentially related to species richness (Chao 1 estimator) and the abundance of the entire bird community as well as five selected farmland species were analysed with the use of generalized linear mixed models.

Results. Some associations between the studied variables and bird populations were season/year specific, while others had a constant direction (positive or negative) across seasons and/or years. The latter were distance to the nearest turbine, field size, number of wind turbines, proximity of settlements and water bodies. Spatial autocorrelation and counting time were significantly correlated with bird population estimates but the directions of these relationships varied among seasons and years. Associations between abundance of individual species and environmental variables were species-specific.

Conclusions. The results demonstrated a constant negative relationship between wind turbine proximity and bird numbers. Other environmental variables, such as field size, proximity of settlements and water bodies that also had constant associations with bird populations across seasons may be taken into account when minimizing adverse effects of wind farm development on birds or choosing optimal locations of new turbines.

Subjects Biodiversity, Conservation Biology, Ecology, Environmental Sciences, Science Policy

Keywords Agricultural landscape, Biodiversity, Field, Season, Settlement, Turbine

INTRODUCTION

Human—wildlife conflicts are one of the main problems worldwide resulting from growing energy demand, agricultural intensification and expansion of urban areas on the one side, and rising needs for halting biodiversity loss, protecting natural ecosystems and sustaining their services on the other (*Sovacool, 2013; Bakken et al., 2014; Little et al., 2014*). These

Submitted 14 October 2015

Accepted 13 May 2016

Published 19 July 2016

Corresponding author

Zuzanna M. Rosin,
rossin@amu.edu.pl

Academic editor

Patricia Gandini

Additional Information and
Declarations can be found on
page 14

DOI 10.7717/peerj.2105

© Copyright
2016 Rosin et al.

Distributed under
Creative Commons CC-BY 4.0

OPEN ACCESS

conflicts are the most serious in cases where investments designed to improve quality of the environment constitute a danger for ecosystem services including biodiversity, pest control and nutrient circulation (*Leddy, Higgins & Naugle, 1999; Pearce-Higgins et al., 2012; Bakken et al., 2014*). Thus, land management of habitats and landscapes should focus on finding solutions that will alleviate human—wildlife conflicts (*Cole & Dahl, 2013; Miller et al., 2014; Mouysset, Doyen & Jiquet, 2014*).

A good example of investments that have both costs and benefits to the environment is wind farms—carbon-free power stations that have mostly negative direct and indirect effects on animals, particularly birds and bats (e.g., *Drewitt & Langston, 2006; Kuvlesky et al., 2007; Santone et al., 2013*). According to some authors (*Drewitt & Langston, 2006; Kuvlesky et al., 2007*) these effects include collisions with turbines, displacement due to disturbance, alterations of habitat and microclimate, and also consequences for vocal communication (*Zwart et al., 2016*). Several groups of birds, for example farmland birds, have recently been considered one of the most endangered vertebrates in Europe (e.g., *Krebs et al., 1999; Tryjanowski, 2000; Tryjanowski et al., 2011*). Hence, to effectively minimize the adverse effects of wind farms on birds, it is essential to recognize the factors that influence species richness and abundance of birds within farms (*Marques et al., 2014*). The majority of studies on wind farm-bird relationships focused on describing the negative effects of turbines on bird populations in one period of the annual cycle of birds, usually migration or breeding (e.g., *Leddy, Higgins & Naugle, 1999*). However, the effects of different environmental variables may vary during a year and among years (e.g., *Carrete et al., 2012*), which may generate difficulties in the management of habitats within wind farms in a constant conservation-friendly way for birds. Therefore, the crucial problem is to identify these factors that have consistent effect on birds within a wind farm regardless of the season and year. To date this difficulty has not been overcome in wind farms despite their growing importance for world energy markets (*Trancik, 2014*) and rising evidence of their negative effects on birds (*Kuvlesky et al., 2007*).

The aim of this study was to determine the factors that have significant predictive relationships with bird species richness and abundance in the same direction among seasons and years, to provide practical guidelines for the management and development of a wind farm. We expected constant negative relations of wind turbines vicinity with bird species richness and abundance (according to *Drewitt & Langston, 2006; Kuvlesky et al., 2007*) that however may be modified by local environmental conditions (e.g., presence of water bodies, settlements, high fields diversity) as well as undergo seasonal variations. Moreover, we also studied associations between abundance of selected common farmland species and environmental variables to test whether response of individual species is representative for the entire bird community.

METHODS

Study area

The study was conducted in the largest Polish wind farm located in Wielkopolska Province near Margonin (52°58'N, 17°05'E) between 2011 and 2013. The

wind farm was composed of 60 turbines (currently 113 turbines) with total power of 120 MW and covered an area exceeding 100 km². The windmills work since 2009 and are characterized by tower height of 100 m and blade span of 90 m. The wind farm is located in intensive agricultural landscape composed mainly of arable fields (cereals, potatoes, maize) diversified by forests and water basins.

Data collection

At the study plot, 36 points were randomly selected from a regular grid of 0.5 km squares. Bird surveys for this study were obtained by counting birds once a ten days between March 2011 and February 2013. Standard bird point counts (*Bibby et al., 2000; Sutherland, Newton & Green, 2004*), lasting 5 min, with a 250-m sampling radius were conducted at each point by two experienced observers (PSz, MT) beginning at dawn and conducted until 4.5 h after sunrise. Each visit was conducted during favourable weather conditions without rain and little or no wind (below 3 in the Beaufort scale). Observers moved between points by cars. The counts were performed using binoculars (10 × 42); numbers of all seen and heard individuals of each species were recorded. The study was conducted in accordance with Polish law.

The following environmental explanatory variables potentially affecting the species richness and abundance of birds were calculated for each counting point in Quantum GIS 1.7 for each point (*Table 1*):

1. Mean area (ha) of agricultural fields within a 1-km radius. Generally, larger crop fields are known to reduce bird species richness (*Morales et al., 2012*), especially in intensively managed landscape as it was the case in our study area.
2. Variation in field area measured as the coefficient of variation in a 1-km radius. Different farmland species have various habitat preferences in terms of field size (e.g., *Rosin et al., 2012; Altewischer et al., 2015*) thus higher variation in field size may increase spatial heterogeneity and thus species richness (*Pickett & Siriwardena, 2011*).
3. Road length (m) within a 1-km radius. Asphalt and country roads were included. Major effect of road on birds is mortality via collisions with cars thus one may expect negative relationship between road density and species richness (*Orłowski, 2008; Mammides, Kadis & Coulson, 2015*).
4. Forest cover (%) within a 1-km radius (ha). Woodland patches may serve as a breeding habitat for some species foraging in farmland and thus may increase total species richness (*Tworek, 2004; Bouvier et al., 2014*).
5. Distance (m) to the nearest human settlements. Human settlements, usually belonging to farmers are breeding habitat for some farmland species (e.g., sparrows, swallows) and thus may increase species richness (*Šálek et al., 2015*). However, humans may also negatively affect wild species by disturbance and activity of domestic animals (*Rosin et al., 2012; Doherty, Bengsen & Davis, 2014*).
6. Distance (m) to the nearest water body (a pond or lake larger than 1 ha). Former study indicated that water habitats increase farmland biodiversity (*Surmacki, 1998*).
7. Distance (m) to the nearest wind turbine. This variable describes impact of the nearest wind turbine on birds.

Table 1 Basic summary statistics of explanatory and dependent variables in randomly selected points within the studied wind farm ($n = 36$). Chao 1 estimates are given in brackets.

Variable	Abbreviation	Mean \pm SE	Min	Max
Explanatory variables				
Mean area of agriculture fields within a 1-km radius (ha)	FieldS	13.9 \pm 1.9	2.4	44.4
Index of field area diversity within a 1-km radius	CV	0.733 \pm 0.050	0.184	1.533
Road length within a 1-km radius (m)	Road	7,569 \pm 348	2,814	12,611
Forest cover (%) within a 1-km radius (ha)	Forest	21.6 \pm 4.3	0.2	93.6
Distance to the nearest human settlements (m)	Settle	353 \pm 40	45	1,129
Distance to the nearest water basin (m)	Water	640 \pm 74	99	1,909
Distance to the nearest wind turbine (m)	DTurb	398 \pm 42	20	998
Number of wind turbines in a 1-km radius	NTurb	3.2 \pm 0.3	1	7
Dependent variables				
Species richness : periods & years				
(Chao 1 estimator in brackets)				
Spring migration (March–April) 2011		6.4 \pm 0.2 (9.5 \pm 0.6)	0 (0)	15 (47)
Spring migration (March–April) 2012	–	7.1 \pm 0.2 (9.2 \pm 0.4)	1 (1)	16 (35)
Breeding season (May–July) 2011		7.4 \pm 0.2 (11.9 \pm 0.5)	1 (1)	19 (83)
Breeding season (May–July) 2012		8.6 \pm 0.2 (13.5 \pm 0.6)	1 (1)	19 (107)
Autumn migration (August–November) 2011		4.9 \pm 0.1 (6.2 \pm 0.2)	0 (0)	19 (36)
Autumn migration (August–November) 2012		5.8 \pm 0.2 (7.6 \pm 0.3)	0 (0)	19 (41)
Winter (December–February) 2011		2.0 \pm 0.1 (2.4 \pm 0.2)	0 (0)	7 (16)
Winter (December–February) 2012		2.8 \pm 0.1 (3.2 \pm 0.2)	0 (0)	10 (16)
Abundance: periods & years				
Spring migration (March–April) 2011		35.3 \pm 7.5	0	1,233
Spring migration (March–April) 2012		26.1 \pm 3.7	5	619
Breeding season (May–July) 2011		25.4 \pm 2.8	2	766
Breeding season (May–July) 2012	–	25.1 \pm 1.2	2	178
Autumn migration (August–November) 2011		42.3 \pm 3.1	0	633
Autumn migration (August–November) 2012	–	40.5 \pm 3.7	0	965
Winter (December–February) 2011		9.3 \pm 1.1	0	134
Winter (December–February) 2012	–	17.0 \pm 2.4	0	283

8. Number of wind turbines within a 1-km radius. This variable was calculated because it described joint impact of a few turbines on birds.

Data handling and analysis

Our dependent variables were species richness and abundance of birds in every survey. Since the inherent feature of field survey is imperfect detection of species, we used corrected number of species by calculation Chao-1 estimator for each survey (*Gotelli & Chao, 2013*). Non-parametric estimators (e.g., Chao1) perform best in empirical comparisons and benchmark surveys, and have a more rigorous framework of sampling theory (demonstrating that both are robust estimators of minimum richness; *Shen, Chao & Lin, 2003*) than other methods, e.g., parametric estimators (*Gotelli & Chao, 2013*).

Generalized linear mixed models with Poisson error and log-link function were built to analyze the factors affecting Chao 1 species richness estimator and abundance in each survey during following seasons of the year that relate to biological cycles of bird life; (1) spring migration (March–April), (2) breeding period (May–July), (3) autumn dispersal and migration (August–November), and (4) winter (December–February). The “lme4” package (Bates *et al.*, 2015) implemented in R (R Core Team, 2014) was used for this purpose. Models were built separately for every season in 2011 (March 2011–February 2012) and 2012 (March 2012–February 2013). To take spatial autocorrelation in dependent variables for each survey into account, we applied the approach proposed by Diniz-Filho, Rangel & Bini (2008). Spatial autocovariate was calculated in the SAM 4.0 statistical software (Rangel, Diniz-Filho & Bini, 2010). The spatial autocorrelation was modelled as an autoregressive term in generalized linear mixed models. Thus, our model was a lagged-response model (Dormann *et al.*, 2007). The spatial term was present in every model. We also included time of the survey started at each point as a covariate. The time was expressed as minutes from the sunrise of local time and it was calculated with the help of on-line calculator (<http://darekk.com/sunrise-sunset-calculator>). Both linear and quadratic terms were included in the model because the activity of birds may change in a non-linear way since sunrise. Thus, independent variables used in modelling were all environmental variables (1)–(8) described above, spatial autocovariate and time since sunrise (both linear and quadratic terms). We also included three random factors: observer, counting point ID and survey identities.

The analogous models were built for the abundance of five selected common species typical for farmland (skylark *Alauda arvensis*, yellowhammer *Emberiza citrinella*, yellow wagtail *Motacilla flava*, lapwing *Vanellus vanellus* and common whitethroat *Sylvia communis*) to investigate if their response to environmental factors differed from the response of the entire bird assemblage.

For each dependent variable and for each period we built all possible model combinations. For abundance of five individual species, all possible model combinations were also built except periods in which there were less than two observations of a given species. Akaike’s Information Criterion (AICc) was calculated for each possible model with the help of “MuMIn” package (Bartoni, 2014). We ranked models according to their Δ AICc values and used the model with the lowest AICc together with associated weight value (the probability that a given model is the best) as that best describing the data. We considered models with Δ AICc lower than 2 as equally good (Burnham & Anderson, 2002). We used model averaging for estimates of function slopes of parameters of interest (Burnham & Anderson, 2002). For model averaging we used 95% confidence set (we used all models with a sum of weights equalling 0.95).

When necessary, we used square root transformation of environmental variables to reduce the effects of outlier observations (Quinn & Keough, 2002). Moreover, in all regression models, variables were standardized to allow a direct comparison of beta (slope) estimates (larger values of betas indicate stronger relationships between explanatory and dependent variables). All variables included in the analyses were weakly correlated between each other ($|r| < 0.427$, Table S1). Regression models are robust to multicollinearity if the correlation between variables is lower than $r = 0.6$ (Mertler & Vannatta, 2002).

All estimates of statistical parameters (means, slopes) are quoted with standard errors (SE) and/or 95% confidence intervals (CI). We considered the slopes of the generalized linear mixed model function to be significant if their 95% CI did not overlap with zero.

We considered an association between explanatory and dependent variable as constant if there was at least one significant result or if all significant relationships recorded for studied seasons had the same direction (the estimates of function slopes were constantly positive or negative during different seasons).

RESULTS

Summary statistics

Altogether 39,443 individual birds belonging to 128 species were observed between March 2011 and February 2012, and 38,361 individuals of 116 species between March 2012 and February 2013 (Table S2). The highest numbers of birds occurred during autumn migration and breeding season (Table 1). The lowest numbers were noted in winter (Table 1). Mean values for explanatory variables and correlations among them are given in Table 1 and Table S1, respectively.

Bird species richness

The strength and direction of relationships between Chao 1 species richness estimator and the studied environmental variables varied depending on period and year (Table 2, Tables S3 and S4). Constant direction across periods of the year and between years had correlations between species richness estimator and distance to the nearest turbine (positive, Fig. 1, Table 2 and Table S4), mean field size (negative, Fig. 1, Table 2 and Table S4) and spatial autocovariate (positive, that indicated that species richness was spatially predictable; Table 2 and Table S4). Also, constant association was found for time on the day of the survey with decreasing number of birds since sunrise (Table 2 and Table S4). Forest cover positively correlated with Chao 1 species richness estimator in breeding period 2012, but negatively in winter 2012/2013 (Fig. 1, Table 2, Table S4). There was a non-linear relationship between the estimates of species richness and time since sunrise (Table 2 and Table S4). Generally, the number of species increased for about two hours since sunrise, and later it decreased (Fig. 1) but not in breeding period 2012 (Table 2 and Table S4).

Abundance of birds

Similarly to species richness, the strength and direction of relationships found between species abundance and environmental variables depended on season and year (Table 2, Tables S5 and S6). Among the variables correlated with bird abundance the constant association across periods of the year and among years was found for distance to the nearest turbine (positive; Table 2 and Table S6), distance to the nearest settlement and water body (negative, Fig. 2, Table 2 and Table S6) and number of turbines in a 1-km radius (positive Fig. 2, Table 2 and Table S6). Variation in field size positively correlated with abundance of birds during spring migration 2011 and in winter 2012/2013 (Fig. 2, Table 2 and Table S6), but negatively during breeding period 2011, autumn migration 2011 and winter 2011/2012 (Table 2 and Table S6). There were statistically significant,

Table 2 Summarized effects (function slopes \pm (SE)) of variables correlated to Chao 1 estimator of species richness and abundance in the studied wind farm in different seasons and years. Orange cells indicate statistically significant positive relationships, blue cells indicate statistically significant negative relationships and grey cells indicate non-significant relationships.

	Explanatory variables										
	Auto	CV	DTurb	FieldS	Forest	NTurb	Road	Settle	Sunrise	Sunrise^2	Water
Chao 1 estimator											
Spring migration 2011			0.285 (0.085)						-0.067 (0.034)	-0.173 (0.039)	
Spring migration 2012	0.148 (0.037)		0.199 (0.071)						-0.085 (0.027)		
Breeding period 2011	0.027 (0.012)								-0.169 (0.023)		
Breeding period 2012	0.100 (0.029)		0.185 (0.092)		0.188 (0.077)					0.121 (0.032)	
Autumn migration 2011	0.049 (0.013)		0.187 (0.051)						-0.140 (0.019)		
Autumn migration 2012	0.629 (0.084)		0.160 (0.048)	-0.168 (0.047)						-0.054 (0.027)	
Winter 2011/2012	0.136 (0.029)		0.427 (0.096)							-0.248 (0.085)	
Winter 2012/2013	0.359 (0.063)				-0.167 (0.076)						
Consistency	+		+	-					-		
Abundance											
Spring migration 2011	0.111 (0.015)	0.250 (0.114)	0.262 (0.133)						-0.126 (0.024)	-0.423 (0.023)	
Spring migration 2012	0.414 (0.068)								-0.326 (0.017)	0.075 (0.021)	
Breeding period 2011	-0.227 (0.015)	-0.159 (0.079)						-0.192 (0.094)	0.038 (0.017)	0.047 (0.011)	
Breeding period 2012	0.241 (0.042)							-0.169 (0.072)		0.050 (0.013)	
Autumn migration 2011	-0.054 (0.008)	-0.161 (0.071)							-0.154 (0.007)	0.270 (0.011)	-0.174 (0.075)
Autumn migration 2012	2.310 (0.036)							-0.254 (0.095)	-0.068 (0.007)	0.036 (0.013)	
Winter 2011	-0.807 (0.040)	-0.345 (0.153)	0.344 (0.172)	-0.364 (0.165)					-0.097 (0.027)		
Winter 2012	2.248 (0.101)	0.314 (0.136)				0.345 (0.151)			-0.907 (0.017)	-0.263 (0.028)	
Consistency			+	-		+		-			-

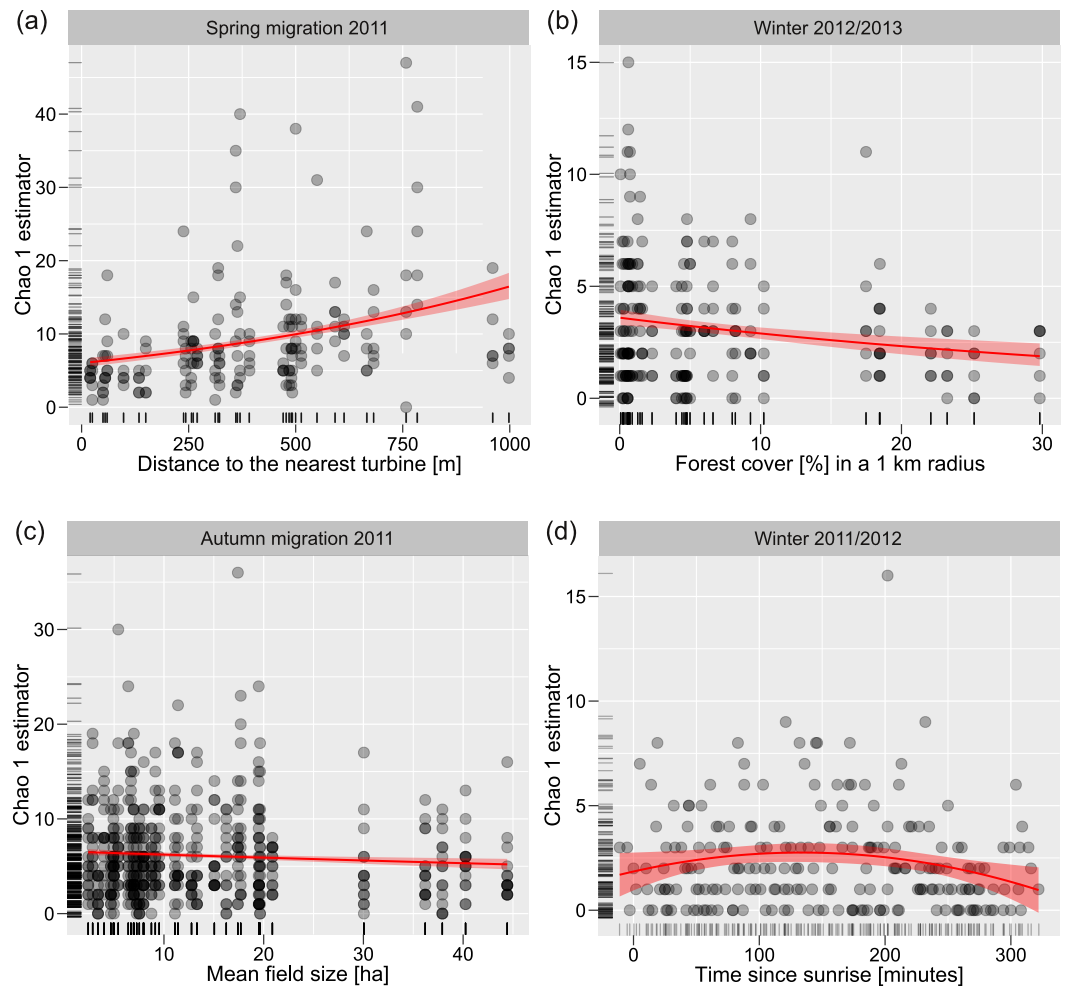


Figure 1 Relationships between bird species richness and environmental variables. Exemplary relationships between bird species richness and distance to the nearest turbine (A), forest cover in a 1-km radius (B), mean field size (C), and quadratic effect of time since sunrise (D). Poisson regression fitted with standard errors.

both linear and non-linear, relationships between bird abundance and time since sunrise, but directions of these relationships varied (Table 2 and Table S6).

Individual species responses

Relationships between abundance of selected species and environmental variables varied in strength and direction depending on species. Skylark abundance was constantly related to forest cover (negative), spatial autocovariate (positive), distance to the nearest settlement (positive) and water body (negative, Table 3 and Table S8). There were constant associations between abundance of yellowhammer and field area diversity (positive), distance to the nearest turbine and forest cover (positive, Table 3 and Table S10). Abundance of yellow wagtail was constantly related to distance to the nearest turbine (negatively), forest cover (negatively), number of turbine (positively), distance to the nearest settlement (positively) and water basin (negatively, Table 3 and Table S12). Lapwing abundance was constantly

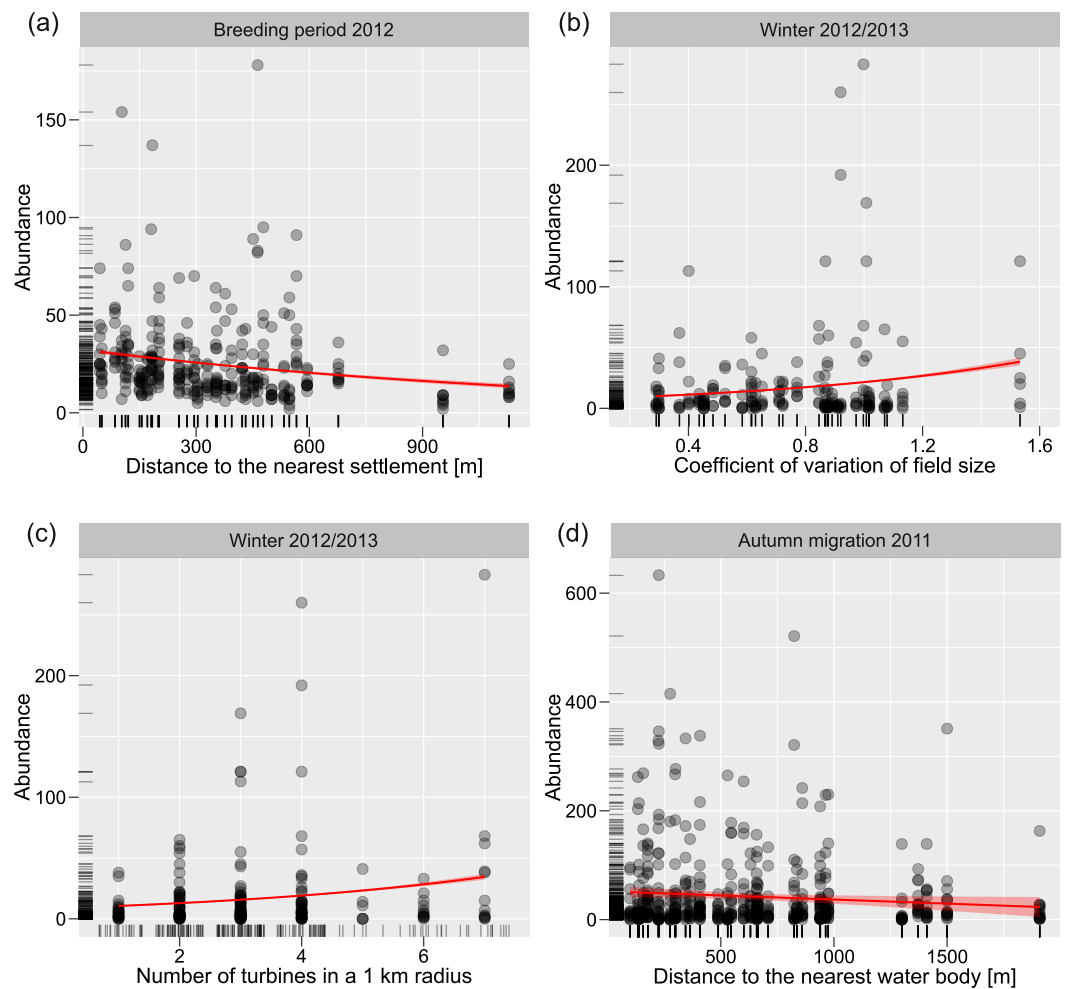


Figure 2 Relationships between bird abundance and environmental variables. Exemplary relationships between bird abundance and distance to the nearest settlements (A), variation in field size (B), number of wind turbines in a 1-km radius (C), and distance to the nearest water body (D). Poisson regression fitted with standard errors.

related to forest cover (negatively) and number of turbines (negatively, [Table 3](#) and [Table S14](#)). There were constant associations between abundance of common whitethroat and distance to the nearest turbine (positive), and road length within a 1-km radius (positive, [Table 3](#) and [Table S16](#)). There were statistically significant, both linear and non-linear, relationships between species abundance and time since sunrise, and they were constant across seasons in case of yellowhammer and yellow wagtail (negative, [Table 3](#), [Tables S10](#) and [S12](#)).

DISCUSSION

In this study we show that the strength and direction of relationships between environmental variables and bird species richness and abundance in a wind farm vary

Table 3 Summarized effects (function slopes \pm (SE)) of variables correlated to abundance of selected farmland bird species in the studied wind farm in different seasons and years. Orange cells indicate statistically significant positive relationships, blue cells indicate statistically significant negative relationships and grey cells indicate non-significant relationships.

Season	Explanatory variables										
	Auto	CV	DTurb	Fields	Forest	NTurb	Road	Settle	Sunrise	Sunrise^2	Water
Skylark <i>Alauda arvensis</i>											
Spring migration 2011	0.433 (0.176)					0.117 (0.041)		0.155 (0.041)			-0.143 (0.042)
Spring migration 2012	0.421 (0.083)				-0.083 (0.042)		-0.094 (0.041)	0.085 (0.039)			-0.096 (0.041)
Breeding period 2011	0.615 (0.080)				-0.120 (0.056)			0.181 (0.050)			
Breeding period 2012	0.580 (0.109)				-0.086 (0.040)						-0.099 (0.038)
Autumn migration 2011	2.294 (0.310)				-0.645 (0.165)				0.555 (0.74)	-0.450 (0.107)	
Autumn migration 2012	1.698 (0.367)							0.596 (0.100)	-0.858 (0.123)		
Consistency	+				-	+	-	+	+	-	-
Yellowhammer <i>Emberiza citrinella</i>											
Spring migration 2011		0.533 (0.218)			0.823 (0.268)						
Spring migration 2012	-0.289 (0.123)		0.344 (0.149)								
Breeding period 2011	-0.344 (0.108)		0.284 (0.139)		0.417 (0.142)						
Breeding period 2012					0.352 (0.128)				-0.156 (0.061)		
Autumn migration 2011	0.306 (0.045)	0.276 (0.128)			0.433 (0.129)				-0.161 (0.040)		
Autumn migration 2012	0.164 (0.060)								-0.167 (0.051)	-0.408 (0.090)	
Winter 2011	5.362 (0.429)										
Winter 2012	0.347 (0.146)									-0.418 (0.100)	
Consistency		+	+		+				-	-	
Yellow wagtail <i>Motacilla flava</i>											
Spring migration 2011	-0.448 (0.171)			-0.163 (0.002)	-0.313 (0.002)	0.368 (0.107)		0.258 (0.008)	-0.353 (0.133)	-0.361 (0.183)	-0.387 (0.104)

(continued on next page)

Table 3 (continued)

Season	Explanatory variables										
	Auto	CV	DTurb	Fields	Forest	NTurb	Road	Settle	Sunrise	Sunrise^2	Water
Spring migration 2012											
Breeding period 2011	-0.483 (0.238)		-0.225 (0.094)	0.266 (0.090)	-0.445 (0.105)					-0.119 (0.059)	
Breeding period 2012		-0.242 (0.119)			-0.279 (0.127)			0.308 (0.121)			
Autumn migration 2011									-0.593 (0.083)		-0.600 (0.125)
Autumn migration 2012	0.718 (0.316)		-0.284 (0.121)			0.248 (0.126)	-0.371 (0.136)		-0.277 (0.104)	-0.374 (0.120)	-0.297 (0.129)
Consistency		-	-			+	-	+	-	-	-
Lapwing <i>Vanellus vanellus</i>											
Spring migration 2011		-3.717 (1.255)		1.971 (0.718)		-2.527 (1.036)					-1.508 (0.555)
Spring migration 2012									-0.949 (0.476)		
Breeding period 2011					-1.615 (0.740)	-3.114 (0.974)					
Autumn migration 2011					-30.247 (7.892)		12.893 (4.371)		0.778 (0.219)	36.350 (3.830)	
Consistency		-		+	--	-	+			+	-
Common whitethroat <i>Sylvia communis</i>											
Spring migration 2011											
Spring migration 2012											
Breeding period 2011			0.383 (0.167)								
Breeding period 2012			0.317 (0.142)			-0.091 (0.018)	0.364 (0.119)	-0.305 (0.104)		0.257 (0.091)	
Autumn migration 2011											
Autumn migration 2012							2.088 (0.766)				
Consistency			+			-	+	-		+	

greatly among seasons and years. Novelty of our paper lays in determining the variables that had significant, constant and predictive relationships with bird communities.

Avian biology and habitat requirements in temperate regions substantially vary depending on part of a year (season). Thus, the effect of environmental factors on birds changes within and between years (Møller, 1984; Carrete et al., 2012). This obvious fact has serious consequences for working out efficient conservation strategies. For example, in our study, forest cover within a 1-km radius from a wind turbine was positively related with species richness during breeding period 2012 but negatively correlated with species richness during winter 2012/2013. Therefore, the environmental variables that are related to bird populations in one direction (positive or negative) across seasons and years are the most valuable for conservation of biodiversity in wind farms (and possibly other areas). Implementing conservation actions usually assumes constant and predictable effects of some alterations in the environment on species. For example, planting trees or creating land-use mosaic assume their constant effect on species richness and abundance. Of course, the factors appearing seasonally or stochastically may have also a considerable impact on birds in wind farms. However, if a given environmental variable affects species richness and abundance in different directions among seasons and/or years, then conservation actions altering that variable would be a waste of money and resources. These remarks raise concerns about the suitability and unknown consequences of studies conducted in a specific period (e.g., breeding season) or only a single year.

Among the variables that showed consistent patterns over time was distance to the nearest turbine that positively correlated with species richness and abundance. This is one of the first pieces of evidence that proximity of wind turbines is negatively related to bird communities within wind farms (Leddy, Higgins & Naugle, 1999). The direct effect of turbines, namely moving blades, may chase or kill birds. Wind turbines may also possibly change birds' movement pattern across the landscape (Kuvlesky et al., 2007). We also observed that during cold days, mostly in winter, blades are covered by ice. In the middle of a day, when temperature rises, this ice drops and is scattered by blades in the proximity of turbines (P Skórka, 2013, unpublished data). As ice particles are numerous and often fairly large, they may directly negatively affect bird behaviour. Moreover, Zwart et al. (2016) showed experimentally that in the presence of wind farm noise, male robins *Erithacus rubecula* substantially reduced usage of low-frequency elements during simulated territorial intrusions. This is particularly important in a context of social interactions between males from adjacent territories, since low-frequency songs are used in many song birds in territory defense as a signal of aggressive motivation and threatening display (Benedict, Rose & Warning, 2012). This, in turn, may lead to difficulties in territory holding (McMullen, Schmidt & Kunc, 2014; Zwart et al., 2016). Unexpectedly, in one season (winter 2012/2013), we observed positive association between abundance of birds and number of turbines within a 1-km radius. Anthropogenic structures, for example electricity pylons, are associated with specific microhabitats that may contribute to conservation of birds in intensive farmland (Tryjanowski et al., 2014). Under turbines, there are sites with ruderal vegetation, puddles and singular stubs, all creating potentially suitable foraging or breeding microhabitats for birds. Moreover, wind turbines attract invertebrates that may constitute

food for birds ([Dudek et al., 2016](#)). These factors may be responsible for occasional positive relationship between birds and wind turbines, and counterbalance the negative impact of the latter. Our study did not consider mortality of birds within a farm as we found only six carcasses, which did not allow for reasonable analysis. Thus, the impact of the studied variables on turbine-related mortality of birds should be investigated in future studies.

Abundance of birds decreased with increasing distance to the nearest settlements and water basins. Many farmland birds are actually synanthropic species (e.g., *Passer montanus*, *P. domesticus*, *Carduelis cannabina*, *C. chloris*) that benefit from human settlements and various buildings belonging to farms where they find food and breeding sites (e.g., [Tryjanowski et al., 2009](#); [Skórka et al., 2013](#); [Rosin et al., in press](#)). Also, several species breeding in human settlements, such as barn swallow *Hirundo rustica*, common starling *Sturnus vulgaris* and white wagtail *Motacilla alba*, usually perform foraging trips to the agricultural fields located in the proximity of buildings. The effect of distance to water was significant for abundance in autumn migration in 2012. Water bodies in intensive farmland are refuges for insects ([Ruggiero et al., 2008](#); [Raebel et al., 2012](#)) and have specific microhabitats that attract farmland birds ([Surmacki, 1998](#)). Moreover, this habitat is frequently used during spring and autumn migration, especially by geese and waders (e.g., [Rosin et al., 2012](#)).

Field size was negatively correlated to species richness and abundance during two seasons. This result is in agreement with other studies showing that agricultural landscapes with smaller fields are inhabited by more species (e.g., [Söderström & Pärt, 2000](#); [Herzon & O'Hara, 2007](#)). Fields in Poland are separated from each other by narrow grassy strips, thus smaller fields increase the density of these potentially good microhabitats for birds ([Concepción et al., 2012](#)). Therefore, another initiative that could help to maintain species richness of birds in wind farms is to divide large fields into smaller ones. Alternatively, if the goal is to reduce the impact of wind turbines on birds, then joining smaller fields into larger ones may hinder birds from settling in the area of wind farms.

Among the variables that showed inconsistent patterns across seasons, coefficient of variation in field area was especially interesting. This variable was positively associated with bird abundance in winter 2011/2012 but negatively in the following winter, and there were no significant relationships with species richness in any examined season. This result contributes to the latest suggestions and findings that relationship between diversity of crop type and size and bird diversity is not always obvious and positive (e.g., [Batáry et al., 2011](#); [Hiron et al., 2015](#)). Similar varying effect was found for forest cover.

Relationships between environmental variables and abundances of selected farmland bird species were species-dependent and varied across seasons and years but were in agreement with the biology of these species. Abundances of yellowhammer and common whitethroat were constantly negatively related to proximity of turbines, and this is consistent with the result for the entire bird community. However, abundance of yellow wagtail increased with decreasing distance to the nearest turbine, possibly because of presence of ruderal vegetation around the base of turbines. Other season-consistent associations were in agreement with habitat preferences of individual species. For example, skylark, yellow

wagtail and lapwing were negatively associated with forest cover, whereas yellow wagtail preferred the vicinity of water basins (compare: *Snow & Perrins, 1998*).

CONCLUSIONS

The effect of wind farms on birds may have a strong local component (*Drewitt & Langston, 2006; Marques et al., 2014*). Nevertheless it is desirable to determine a universal set of environmental drivers of biodiversity within farms because they become more and more common in agricultural landscapes of Europe. Our study provides new perspectives on conservation of birds in wind farms, comparing to earlier studies (e.g., *Carrete et al., 2012; Miller et al., 2014*). We recommend long-term (at least two-year) studies for pre-construction evaluation to determine the factors that influence bird communities in a predictable way regardless of season and year. Negative effects of a wind farm on birds may be reduced by appropriate location of wind turbines (large fields, large distance to settlements and water basins) or by creating/altering specific microhabitats within farms.

ACKNOWLEDGEMENTS

The authors are grateful to the people in charge and the technicians of EDP Poland who made this research possible and thank Christian Kerbiriou and anonymous referee for valuable suggestions to the manuscript. The editorial help of Sylwia Ufnalska is also gratefully acknowledged.

ADDITIONAL INFORMATION AND DECLARATIONS

Funding

Technical support and funding was partially provided by EMPEKO and ENINA agencies. Zuzanna M. Rosin was financially supported by the Foundation for Polish Science (grant START 2014 no. 96.2014). Piotr Skórka was funded by the grant Sonata Bis 4 no. 2014/14/E/NZ8/00165 from the National Science Centre, Poland. The funders had no role in study design, data collection and analysis, decision to publish, or preparation of the manuscript.

Grant Disclosures

The following grant information was disclosed by the authors:

EMPEKO.

ENINA agencies.

Foundation for Polish Science: START 2014 no. 96.2014.

National Science Centre: Sonata Bis 4 no. 2014/14/E/NZ8/00165.

Competing Interests

Andrzej Luczak is an employee of ENINA, Poznań, Poland.

Author Contributions

- Zuzanna M. Rosin conceived and designed the experiments, analyzed the data, wrote the paper, prepared figures and/or tables.

- Piotr Skórka conceived and designed the experiments, analyzed the data, wrote the paper, prepared figures and/or tables, reviewed drafts of the paper.
- Paweł Szymański and Marcin Tobolka performed the experiments, contributed reagents/materials/analysis tools, reviewed drafts of the paper.
- Andrzej Luczak and Piotr Tryjanowski conceived and designed the experiments, reviewed drafts of the paper.

Data Availability

The following information was supplied regarding data availability:

The raw data has been supplied as [Data S1](#).

Supplemental Information

Supplemental information for this article can be found online at <http://dx.doi.org/10.7717/peerj.2105#supplemental-information>.

REFERENCES

- Altewischer A, Buschewski U, Ehrke C, Fröhlich J, Gärtner A, Giese P, Günter F, Heitmann N, Hestermann M, Hoffmann H, Kleinschmidt F, Kniepkamp B, Linke W, Mayland-Quellhorst T, Pape J, Peterson T, Schendel V, Schwieger S, Wadenstorfer A, Fischer K. 2015. Habitat preferences of male corn buntings *Emberiza calandra* in north-eastern Germany. *Acta Ornithologica* **50**:1–10 DOI 10.3161/00016454AO2015.50.1.001.
- Bakken TH, Aasec AG, Hagend D, Sundta H, Bartond DN, Lujalac P. 2014. Demonstrating a new framework for the comparison of environmental impacts from small- and large-scale hydropower and wind power projects. *Journal of Environmental Management* **140**:93–101 DOI 10.1016/j.jenvman.2014.01.050.
- Bartoń K. 2014. MuMIn: multi-model inference. R package version 1.10.0. Available at <http://cran.r-project.org/package=mumin>.
- Batáry P, Fischer J, Báldi A, Crist TO, Tschardt T. 2011. Does habitat heterogeneity increase farmland biodiversity? *Frontiers in Ecology and the Environment* **9**:152–153 DOI 10.1890/11.WB.006.
- Bates D, Maechler M, Bolker B, Walker S. 2015. Fitting linear mixed models using lme4. *Journal of Statistical Software* **67**:1–48.
- Benedict L, Rose A, Warning N. 2012. Canyon wrens alter their songs in response to territorial challenges. *Animal Behavior* **84**:1463–1467.
- Bibby CJ, Burgess ND, Hill DA, Mustoe S. 2000. *Bird census techniques*. 2nd edition. London: Academic Press.
- Bouvier J-C, Muller I, Génard M, Lescourret F, Lavigne C. 2014. Nest-Site and Landscape Characteristics Affect the Distribution of Breeding Pairs of European Rollers *Coracias garullus* in an Agricultural Area of Southeastern France. *Acta Ornithologica* **49**:23–32 DOI 10.3161/000164514X682869.
- Burnham KP, Anderson DR. 2002. *Model selection and multi-model inference: a practical information-theoretic approach*. New York: Springer.

- Carrete M, Sánchez-Zapata J, Benítez JR, Lobón M, Montoya F. 2012. Mortality at wind-farms is positively related to large-scale distribution and aggregation in griffon vultures. *Biological Conservation* 145:102–108 DOI 10.1016/j.biocon.2011.10.017.
- Cole SG, Dahl EL. 2013. Compensating White-tailed Eagle mortality at the Smøla wind-power plant using electrocution prevention measures. *Wildlife Society Bulletin* 1:84–93.
- Concepción ED, Diaz M, Kleijn D, Báldi A, Batáry P, Clough Y, Gabriel D, Herzog F, Holzschuh A, Knop E, Marshall EJP, Tscharrntke T, Verhulst J. 2012. Interactive effects of landscape context constrain the effectiveness of local agri-environmental management. *Journal of Applied Ecology* 49:695–705.
- Diniz-Filho JAF, Rangel TFLVB, Bini LM. 2008. Model selection and information theory in geographical ecology. *Global Ecology and Biogeography* 17:479–488 DOI 10.1111/j.1466-8238.2008.00395.x.
- Doherty TS, Bengsen AJ, Davis RA. 2014. A critical review of habitat use by feral cats and key directions for future research and management. *Wildlife Research* 41:435–446 DOI 10.1071/WR14159.
- Dormann CF, McPherson JM, Araújo MB, Bivand R, Bolliger J, Carl G, Davies RG, Hirzel A, Jetz W, Kissling WD, Kühn I, Ohlemüller R, Peres-Neto PR, Reineking B, Schröder B, Schurr FM, Wilson R. 2007. Methods to account for spatial autocorrelation in the analysis of species distributional data: a review. *Ecography* 30:609–628 DOI 10.1111/j.2007.0906-7590.05171.x.
- Drewitt AL, Langston RH. 2006. Assessing the impacts of wind farms on birds. *Ibis* 148:29–42 DOI 10.1111/j.1474-919X.2006.00516.x.
- Dudek K, Skórka P, Sajkowska Z, Ekner-Grzyb A, Dudek M, Tryjanowski P. 2016. Distribution pattern and number of ticks on lizards. *Ticks and Tick-Borne Diseases* 7:172–179 DOI 10.1016/j.ttbdis.2015.10.014.
- Gotelli NJ, Chao A. 2013. Measuring and estimating species richness, species diversity, and biotic similarity from sampling data. In: Levin SA, ed. *The Encyclopedia of biodiversity*. 2nd edition, vol. 5. Waltham: Academic Press, 195–211.
- Herzon I, O'Hara RB. 2007. Effects of landscape complexity on farmland birds in the Baltic States. *Agriculture, Ecosystems & Environment* 118:297–306 DOI 10.1016/j.agee.2006.05.030.
- Hiron M, Berg Å, Eggers E, Berggren Å, Josefsson J, Pärt T. 2015. The relationship of bird diversity to crop and non-crop heterogeneity in agricultural landscapes. *Landscape Ecology* 30:2001–2013.
- Krebs JR, Wilson JD, Bradbury RB, Siriwardena GM. 1999. A second silent spring? *Nature* 400:611–612 DOI 10.1038/23127.
- Kuvlesky WP, Brennan LA, Morrison ML, Boydston KK, Ballard BM, Bryant FC. 2007. Wind energy development and wildlife conservation: challenges and opportunities. *Journal of Wildlife Management* 71:2487–2498 DOI 10.2193/2007-248.
- Leddy KL, Higgins KF, Naugle DE. 1999. Effects of wind turbines on upland nesting birds in conservation reserve program grasslands. *Wilson Bulletin* 111:100–104.

- Little RL, Parslow J, Fay G, Grafton QR, Smith ADM, Punt AE, Tuck GN. 2014.** Environmental derivatives, risk analysis and conservation management. *Conservation Letters* 7:196–207 DOI [10.1111/conl.12041](https://doi.org/10.1111/conl.12041).
- Mammides C, Kadis C, Coulson T. 2015.** The effects of road networks and habitat heterogeneity on the species richness of birds in Natura 2000 sites in Cyprus. *Landscape Ecology* 30:67–75 DOI [10.1007/s10980-014-0100-5](https://doi.org/10.1007/s10980-014-0100-5).
- Marques AT, Batalha H, Rodrigues S, Costa H, Ramos Pereira MJ, Fonseca C, Mascarenhas M, Bernardino J. 2014.** Understanding bird collisions at wind farms: An updated review on the causes and possible mitigation strategies. *Biological Conservation* 179:40–52 DOI [10.1016/j.biocon.2014.08.017](https://doi.org/10.1016/j.biocon.2014.08.017).
- McMullen H, Schmidt R, Kunc H. 2014.** Anthropogenic noise affects vocal interactions. *Behavioural Processes* 103:125–128 DOI [10.1016/j.beproc.2013.12.001](https://doi.org/10.1016/j.beproc.2013.12.001).
- Mertler CA, Vannatta RA. 2002.** *Advanced and multivariate statistical methods: practical application and interpretation*. Los Angeles: Pyrczak Publishing.
- Miller TA, Brooks RP, Lanzone M, Brandes D, Cooper J, O'Malley K, Maisonneuve C, Tremblay J, Duerr A, Katzner T. 2014.** Assessing risk to birds from industrial wind energy development via paired resource selection models. *Conservation Biology* 28:745–755 DOI [10.1111/cobi.12227](https://doi.org/10.1111/cobi.12227).
- Møller AP. 1984.** Community structure of birds in agricultural areas in summer and winter in Denmark. *Ecography* 7:413–418 DOI [10.1111/j.1600-0587.1984.tb01142.x](https://doi.org/10.1111/j.1600-0587.1984.tb01142.x).
- Morale MB, Guerrero I, Oñate JJ, Meléndez L. 2012.** Inter-specific association and habitat use in a farmland passerine assemblage. *Ecological Research* 27:691–700.
- Mouysset L, Doyen L, Jiquet F. 2014.** From population viability analysis to coviability of farmland biodiversity and agriculture. *Conservation Biology* 28:187–201 DOI [10.1111/cobi.12184](https://doi.org/10.1111/cobi.12184).
- Orłowski G. 2008.** Roadside hedgerows and trees as factors increasing road mortality of birds: implications for management of roadside vegetation in rural landscapes. *Landscape and Urban Planning* 86:153–161 DOI [10.1016/j.landurbplan.2008.02.003](https://doi.org/10.1016/j.landurbplan.2008.02.003).
- Pearce-Higgins JW, Stephen L, Douse A, Langston RHW. 2012.** Greater impacts of wind farm on bird populations during construction than subsequent operation: results of a multi-site and multi-species analysis. *Journal of Applied Ecology* 49:386–394 DOI [10.1111/j.1365-2664.2012.02110.x](https://doi.org/10.1111/j.1365-2664.2012.02110.x).
- Pickett SR, Siriwardena GM. 2011.** The relationship between multi-scale habitat heterogeneity and farmland bird abundance. *Ecography* 34:955–969 DOI [10.1111/j.1600-0587.2011.06608.x](https://doi.org/10.1111/j.1600-0587.2011.06608.x).
- Quinn GP, Keough MJ. 2002.** *Experimental design and data analysis for biologists*. Cambridge: Cambridge University Press.
- R Core Team. 2014.** *R: a language and environment for statistical computing*. Vienna: R Foundation for Statistical Computing. Available at <http://www.R-project.org/>.
- Raebel EM, Merckx T, Feber RE, Riordan P, Thompson DJ, Macdonald DW. 2012.** Multi-scale effects of farmland management on dragonfly and damselfly assemblages of farmland pond. *Agriculture Ecosystems and Environment* 161:80–87 DOI [10.1016/j.agee.2012.07.015](https://doi.org/10.1016/j.agee.2012.07.015).

- Rangel TFVLB, Diniz-Filho AF, Bini LM. 2010. SAM: a comprehensive application for Spatial Analysis in Macroecology. *Ecography* 33:46–50
DOI 10.1111/j.1600-0587.2009.06299.x.
- Rosin ZM, Skórka P, Pärt T, Zmihorski M, Ekner-Grzyb A, Kwieciński Z, Tryjanowski P. 2016. Villages and their old farmsteads are hot-spots of bird diversity in agricultural landscapes. *Journal of Applied Ecology* In Press DOI 10.1111/1365-2664.12715.
- Rosin ZM, Skórka P, Wylegała P, Krąkowski B, Tobolka M, Myczko Ł, Sparks TH, Tryjanowski P. 2012. Landscape structure, human disturbance and crop management affect foraging ground selection by migrating geese. *Journal of Ornithology* 153:747–759 DOI 10.1007/s10336-011-0791-1.
- Ruggiero A, Céréghino R, Figuerola J, Marty P, Angélibert S. 2008. Farm ponds make a contribution to the biodiversity of aquatic insects in a French agricultural landscape. *Comptes Rendus Biologies* 331:298–308 DOI 10.1016/j.crv.2008.01.009.
- Šálek M, Havlíček J, Riegert J, Nešpor M, Fuchs R, Kipson M. 2015. Winter density and habitat preferences of three declining granivorous farmland birds: the importance of the keeping of poultry and dairy farms. *Journal for Nature Conservation* 24:10–16 DOI 10.1016/j.jnc.2015.01.004.
- Santone P, Norscia C, Milana G, Battisti C, Soccini C, Ferri V, Locasciulli O, Forlizzi E. 2013. Impatto diretto, indiretto e potenziale degli impianti eolici sull' avifauna: prime evidenze da un sito dell' Appennino Abruzzese (Italia centrale). *Biologia Ambientale* 27:3–14.
- Shen T-J, Chao A, Lin C-F. 2003. Predicting the number of new species in further taxonomic sampling. *Ecology* 84:798–804
DOI 10.1890/0012-9658(2003)084[0798:PTNONS]2.0.CO;2.
- Skórka P, Lenda M, Moron D, Tryjanowski P. 2013. New methods of crop production and farmland birds: effects of plastic mulches on species richness and abundance. *Journal of Applied Ecology* 50:1387–1396.
- Snow DW, Perrins CM. 1998. *The birds of the western Palearctic*. concise edition. Vol. 1 and 2. New York: Oxford University Press.
- Söderström B, Pärt T. 2000. Influence of landscape scale on farmland birds breeding in semi-natural pastures. *Conservation Biology* 14:522–533
DOI 10.1046/j.1523-1739.2000.98564.x.
- Sovacool BK. 2013. The avian benefits of wind energy: 2009 update. *Renewable Energy* 49:19–24 DOI 10.1016/j.renene.2012.01.074.
- Surmacki A. 1998. Breeding avifauna of small mid-field ponds in north-western Poland. *Acta Ornithologica* 33:149–157.
- Sutherland WJ, Newton I, Green RE. 2004. *Bird ecology and conservation: a handbook of techniques*. New York: Oxford University Press.
- Trancik JR. 2014. Back the renewables boom. *Nature* 507:300–302 DOI 10.1038/507300a.
- Tryjanowski P. 2000. Changes in breeding populations of some farmland birds in W Poland in relation to changes in crop structure, weather conditions and number of predators. *Folia Zoologica* 49:305–315.

- Tryjanowski P, Hartel T, Báldi A, Szymański P, Tobolka M, Herzon I, Goławski A, Konvička M, Hromada M, Jerzak L, Kujawa K, Lenda M, Orłowski M, Panek M, Skórka P, Sparks TH, Tworek S, Wuczyński A, Żmihorski M. 2011. Conservation of farmland birds faces different challenges in Western and Central–Eastern Europe. *Acta Ornithologica* 46:1–12 DOI 10.3161/000164511X589857.
- Tryjanowski P, Kuźniak S, Kujawa K, Jerzak L. 2009. *Ekologia ptaków krajobrazu rolniczego (in Polish)*. Poznań: Bogucki Wydawnictwo Naukowe.
- Tryjanowski P, Sparks TH, Jerzak L, Rosin ZM, Skórka P. 2014. A paradox for conservation: electricity pylons may benefit avian diversity in intensive farmland. *Conservation Letters* 7:34–40 DOI 10.1111/conl.12022.
- Tworek S. 2004. Factors affecting temporal dynamics of avian assemblages in a heterogeneous landscape. *Acta Ornithologica* 39:155–163 DOI 10.3161/068.039.0201.
- Zwart MC, Dunn JC, McGowan PJK, Whittingham MJ. 2016. Wind farm noise suppresses territorial defense behavior in a songbird. *Behavioral Ecology* 27:101–108 DOI 10.1093/beheco/arv128.